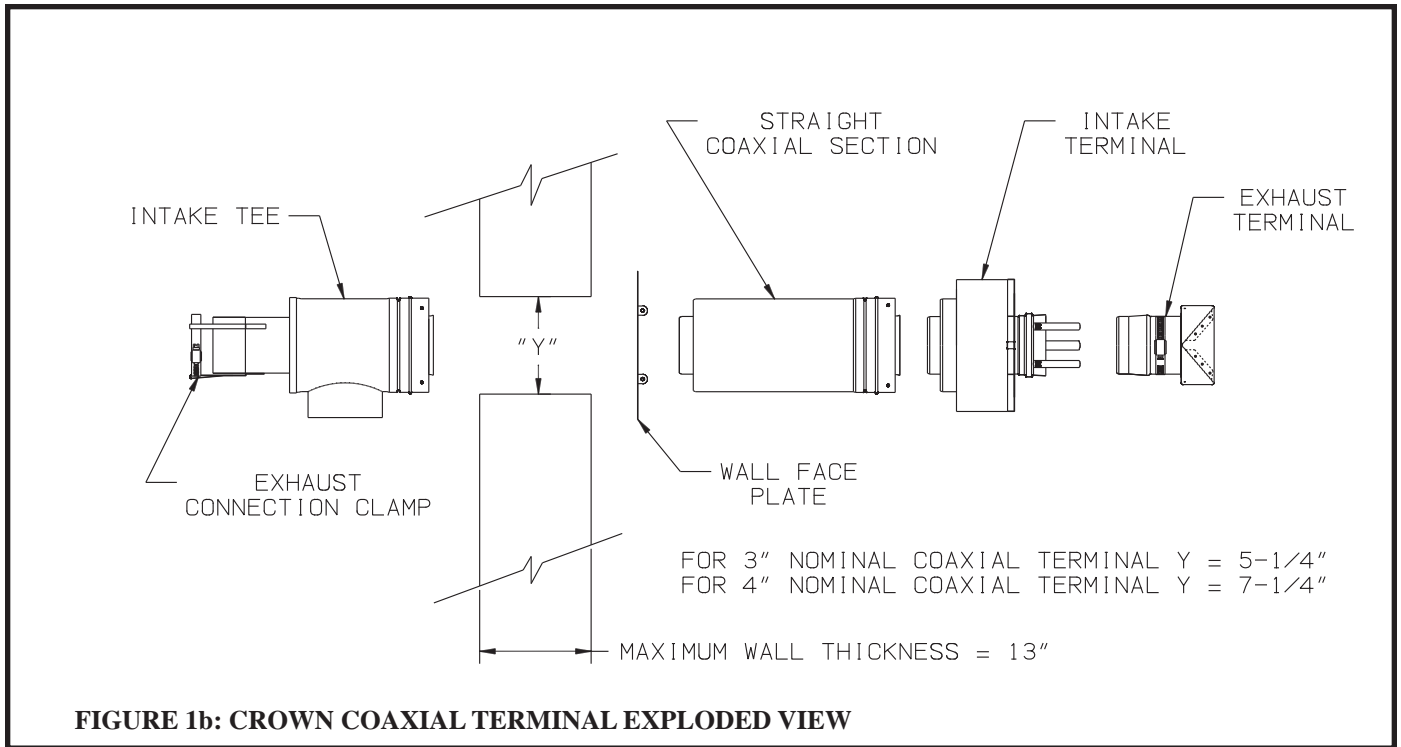
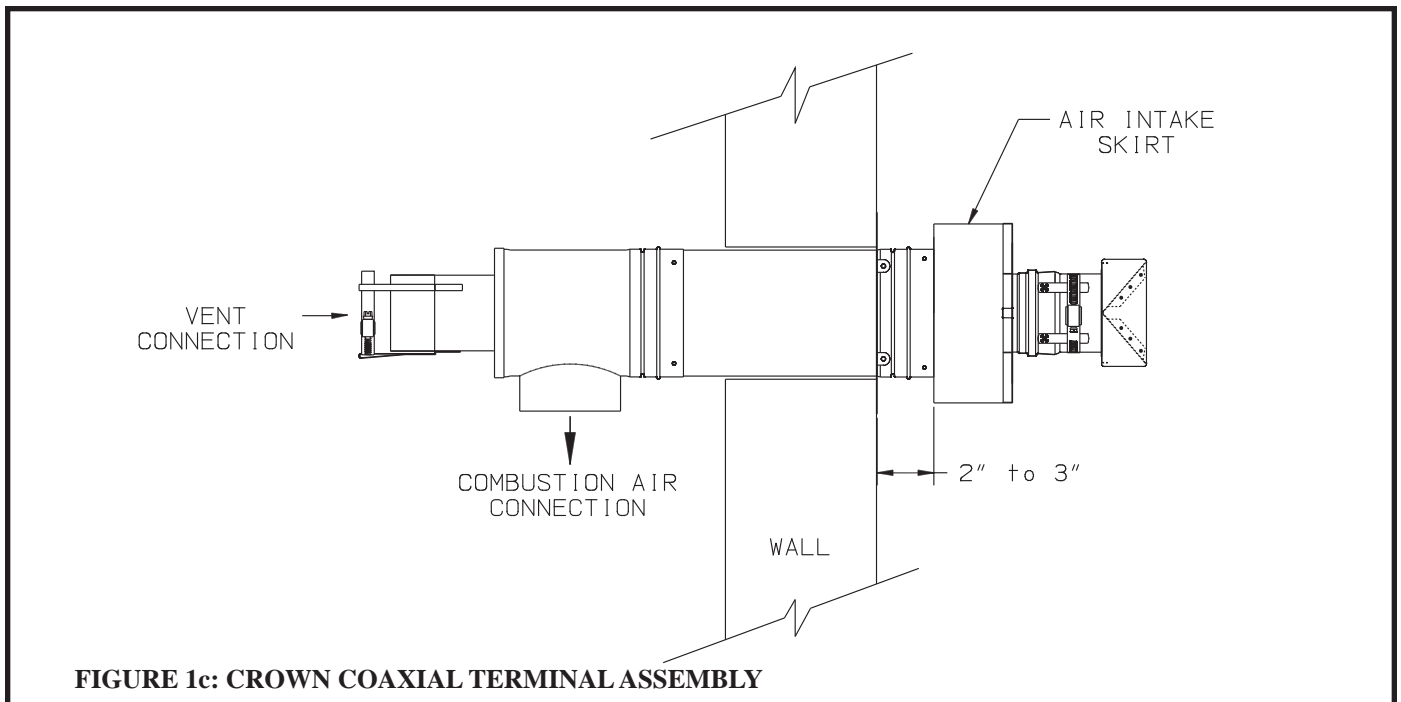




8. Loosen the hose clamp on the end of the exhaust terminal. Mount the exhaust terminal onto the intake terminal with the "V" horizontal (flue gas openings on top and bottom) as shown in Figure 1b. Slip the hose clamp over the "fingers" on the intake terminal and tighten the clamp.
9. Seal all exposed exterior joints, including the joint between the wall face plate and the wall and between the wall face plate and the straight section with an exterior grade silicone sealant.
10. Attach the intake tee to the end of the straight section protruding from the inside wall. Use the procedure described in (4) to clean and assemble these parts.
11. If the inside terminal section is not supported by the wall through which it passes, install additional supports or bracing to support the terminal. Bracing in contact with the coaxial section of the terminal may be combustible.



**FIGURE 1b: CROWN COAXIAL TERMINAL EXPLODED VIEW**



**FIGURE 1c: CROWN COAXIAL TERMINAL ASSEMBLY**